

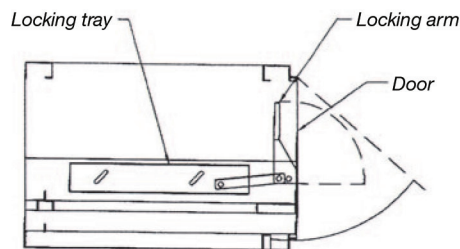
Side Access Leverlock

Part of a Total Systems Approach to Improved Indoor Air Quality (IAQ)

The Side Access Leverlock filter housing is engineered for use with air handling units or other side access equipment. It offers the convenience of servicing the filter from outside the air duct and is especially suited for installations involving limited headroom.

The Leverlock Concept – Fail-safe Mechanical Seal

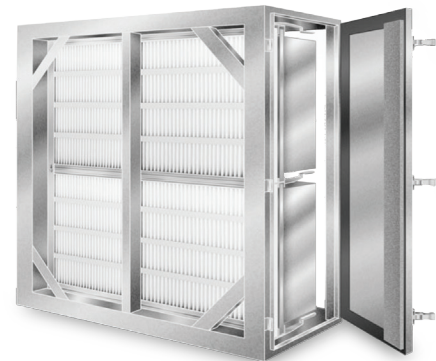
The Side Access Leverlock housing is designed to deliver a fail-safe, mechanically actuated, pressure seal. Its design assures that the final filters are properly sealed — no dirty air by-pass. 2" or 4" prefilters complete the system.



The sealing pressure is applied through locking arm actuators and movable horizontal pressure bars, which force the filter against the gasket surface. Each filter row is served by individual locking mechanisms, and each has to be actuated before the housing door can be secured. When the door is closed, the filters are sealed.

Get the IAQ Advantage – AAF Filters with Antimicrobial for Side Access Leverlock

AAF filters with antimicrobial are designed specifically to improve Indoor Air Quality (IAQ). Air filters are designed to trap and concentrate particulate air contaminants, including viable fungal and bacterial spores. The presence of antimicrobial preservatives in the filter media is intended to preserve the integrity of the media throughout the useful life of the filter. Antimicrobial preservatives are not meant to increase the efficiency of the filter, but rather, they are intended to limit the growth of microorganisms captured by the filter.

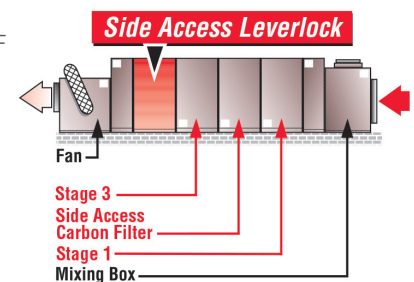


Side Access Filter Housing for IAQ Applications

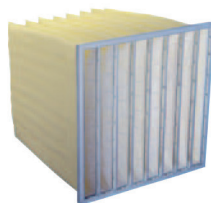
Side Access was specifically designed to meet IAQ air cleaning requirements when used with AAF high-efficiency filters treated with antimicrobial, an EPA registered antimicrobial. Many factors contribute to IAQ problems, but the primary contributors are particulate dust and microbial contamination in the air we breathe.

By upgrading your HVAC system to AAF high-efficiency filters with antimicrobial and Side Access Leverlock housing to ensure filter sealing integrity, you remove the minute airborne particulates that cause allergic reactions, discomfort and health risks.

Buildings with a cleaner air supply have reduced maintenance costs and healthier, more productive employees and tenants.



Use the Side Access Leverlock alone or enhance your system performance by combining it with other AAF International IAQ-engineered filter products.



DriPak® and
DriPak® 2000



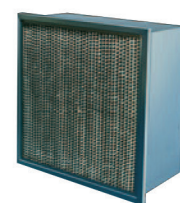
VariCel® V



VariCel® II



PerfectPleat®



VariCel®



BETTER AIR IS OUR BUSINESS®



ENVIRONMENTAL
SOLUTIONS

Side Access Leverlock

Housing Features

Access Doors

Access doors are hinged and have over-center draw type plated latches. The doors seal against the housing with closed cell neoprene gaskets. The standard Side Access Leverlock housing is furnished with one door. A second door is optional.

Rugged Construction

The Side Access Leverlock housing has exceptional structural strength. It utilizes turned-out flanges, welded construction, vertical supports, and angle braces.

The Side Access housing is designed to operate at up to 6" WG negative or positive pressure. Optional high pressure construction is available for service up to 10" WG negative or positive pressure.

Sizes

The Side Access Leverlock housing is offered in 96 sizes, spanning heights from nominal 1' through 8', and widths from nominal 1' through 12'. Capacities range from 1,000 CFM at 500 FPM to 60,000 CFM at 625 FPM.

Larger sizes are available. The Side Access housing is designed to expand using standard sizes as building blocks. For example, a 12' high unit can be built using two 6' high modules. Modules are factory pre-engineered for field installation.

Housing Depth

Standard depth is 22". It is designed to enclose both a prefilter and a final filter, such as the DriPak®, VariCel® or VariCel® V.

Steel Skin Insulation

All Side Access housings can be furnished with optional 2" foil back insulation. Enclosed in a double metal skin, the insulation is external to the airstream. This optional insulation covers the doors, top pans and bottom pans.

Size Code

(Height designation) x (width designation). For example, 2H x 3W is a 2 filter high by 3 filter wide housing (based on a 24 x 24 nominal filter.)

Standard

- 96 sizes
- Depth = 22"
- 16-gauge galvanized steel
- Welded construction
- Turned-out flanges
- Intrigal prefilters
- Internal bracing
- Compact design
- Factory assembled
- Easy to install
- Leverlock mechanism
- Structurally rated up to 6" positive pressure

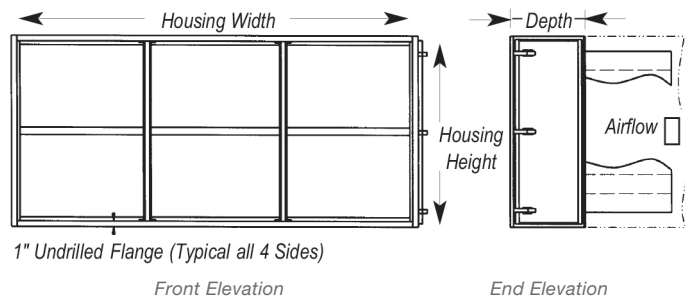
Options

- Double skin insulation
- AHU mating flanges
- Weatherproof construction
- High-pressure construction
- Static pressure taps
- Installed pressure gauges
- Hanging brackets

Capacities (CFM) and Dimensions

Height ↓	Designation	Width →					
		1	2	3	4	5	6
	Housing	28-1/8"	49-1/2"	72-7/8"	99"	122-3/8"	145-3/4"
1	26-7/8"	2,000	4,000	6,000	8,000	10,000	12,000
2	51"	4,000	8,000	12,000	16,000	20,000	24,000
3	75-1/8"	6,000	12,000	18,000	24,000	30,000	36,000
4	99-1/4"	8,000	16,000	24,000	32,000	40,000	48,000

NOTE Capacities are based on an airflow velocity of 500 FPM. For capacities based on velocities of 625 FPM increase capacities by a factor of 1.25. Half size filter housings are available.



The information in this document is the property of American Air Filter Company, Inc. and its affiliated companies (collectively, "AAF") and may not be copied or distributed to any third party, or used for any purpose other than that for which it is supplied, without the express written consent of AAF.

While the information herein is provided in good faith based on information available when the document was created, it should not be relied upon as being complete or accurate, and the products advertised within this document, and their components and accessories, are subject to change without notice. AAF provides this information on an AS IS basis and makes no warranties, expressed or implied, or representations regarding same. This document does not establish, and should not be taken as establishing, and contractual or other commitment binding upon AAF or any of its subsidiaries or associated companies.

ISO Certified Firm ©2016 AAF International
APC-1-120D



BETTER AIR IS OUR BUSINESS®

North & South America

AAF International
9920 Corporate Campus Drive, Suite 2200
Louisville, KY 40223-5000, USA
Tel: 1 502 637 0011
Toll Free: 1 800 477 1214
Email: aafep@aafintl.com