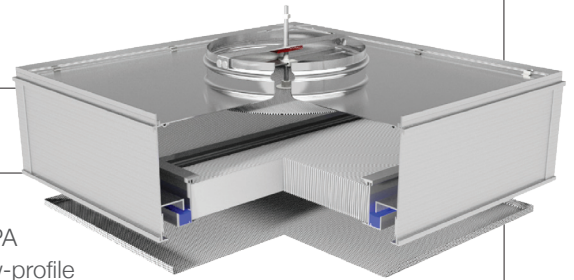


Model 24 LP

REPLACEABLE CLEANROOM FILTER MODULES



- Gel and knife-edge filter seal for positive leak tightness
- Filters replaceable from roomside
- No penetrations of pressure boundary
- 2" filter pack for a lightweight and low-profile design
- In-room airflow damper adjustment with AAF Flanders' proprietary damper adjustment alignment system

Physical Data

Media: Water-resistant, microfibre, fiberglass, or synthetic as required

Filter Pack: Separatorless or thermal pleat design, 2.1" (53mm) thick

Gel Seal: Silicone or urethane base

Media Sealant: Flame retardant polyurethane

Filter Frame: Anodized extruded aluminum with integral gel-filled channel

Hood: Extruded anodized aluminum with spun inlet collar

Damper: Adjustable or fixed baffle plate and optional split butterfly damper

Protective Grille: As specified

Divider: Extruded anodized aluminum

AAF Flanders Model 24 LP roomside replaceable HEPA/ULPA filter modules are lightweight, low-profile ducted units with gel seal mini-pleat or separatorless filter packs. They are designed to provide unidirectional airflow when installed in drywall or tee-bar ceilings. Model 24 LP modules are available in three sizes: nominal 24" x 24", 24" x 36", and 24" x 48", for either 1½" or 2" T-bar with 8", 10", 12", or 14" diameter inlet collars and in two particle size efficiencies: 99.99% on 0.3 micron and 99.9995% on 0.12 micron particles. Every filter is scan-tested after assembly to meet or exceed IEST RP-1 requirements for a Type C or F filter.

Construction

The state-of-the-art filter pack is sealed in an anodized extruded aluminum frame. The sides of the filter pack contain an integral extruded channel that holds cleanroom quality sealing gel. The filter's extruded aluminum center divider is furnished with a port for in-room baffle plate adjustment and measurement of challenge aerosol. The one-piece hood/inlet collar is made of spun aluminum, and the inlet collar is ribbed to secure the flex duct retaining strap. A 22-gauge, 40% open, perforated grille protects the media pack (grille can be either stainless steel, anodized aluminum, or a white powder coated steel face).

Installation & Applications

Model 24 LP modules may be used in cleanrooms for biotech and pharmaceutical manufacturing, hospital pharmacies, the fabrication of medical devices, and other applications requiring ultra-clean air and a roomside replaceable filter element. Holes are drilled on the module's top four corners to secure seismic restraint wires or hang the unit. The standard face velocity range of 70 to 110 FPM is easily adjusted from roomside by a screwdriver-operated damper. Static pressure and challenge aerosol measurements can be taken through a separate roomside port. AAF Flanders does not recommend using the aerosol port as a means to inject the aerosol of choice. Standard construction allows the modules to be operated at a pressure drop of 3.0" w.g.

Model 24 LP Filter Modules

Product Information

Housing Model #	Overall Size (inches)	T-Bar (inches)	Weight (lbs.)	Design Air Flow (CFM)	Unit Resistance ("w.g.)	
					HEPA	ULPA
LP22-1-X*_-Z**	23 $\frac{5}{8}$ x 23 $\frac{5}{8}$	1 $\frac{1}{2}$	25	400	0.67	0.78
LP23-1-X*_-Z**	23 $\frac{5}{8}$ x 35 $\frac{5}{8}$	1 $\frac{1}{2}$	30	600	0.67	0.78
LP24-1-X*_-Z**	23 $\frac{5}{8}$ x 47 $\frac{5}{8}$	1 $\frac{1}{2}$	35	800	0.67	0.78
LP22-2-X*_-Z**	23 $\frac{1}{8}$ x 23 $\frac{1}{8}$	2	25	400	0.67	0.78
LP23-2-X*_-Z**	23 $\frac{1}{8}$ x 35 $\frac{1}{8}$	2	30	600	0.67	0.78
LP24-2-X*_-Z**	23 $\frac{1}{8}$ x 47 $\frac{1}{8}$	2	40	800	0.67	0.78

X = Add F for Fixed Baffle, A for Adjustable Baffle, or B for Split Butterfly Damper.

* = Add 8 for 8", 0 for 10", 2 for 12" or 4 for 14" Inlets.

_ = Add A for Anodized Aluminum Grilles, P for Standard Painted White Grilles, and S for Stainless Steel Grilles.

Z = Add A for Anodized Aluminum Construction or P for Painted White Construction.

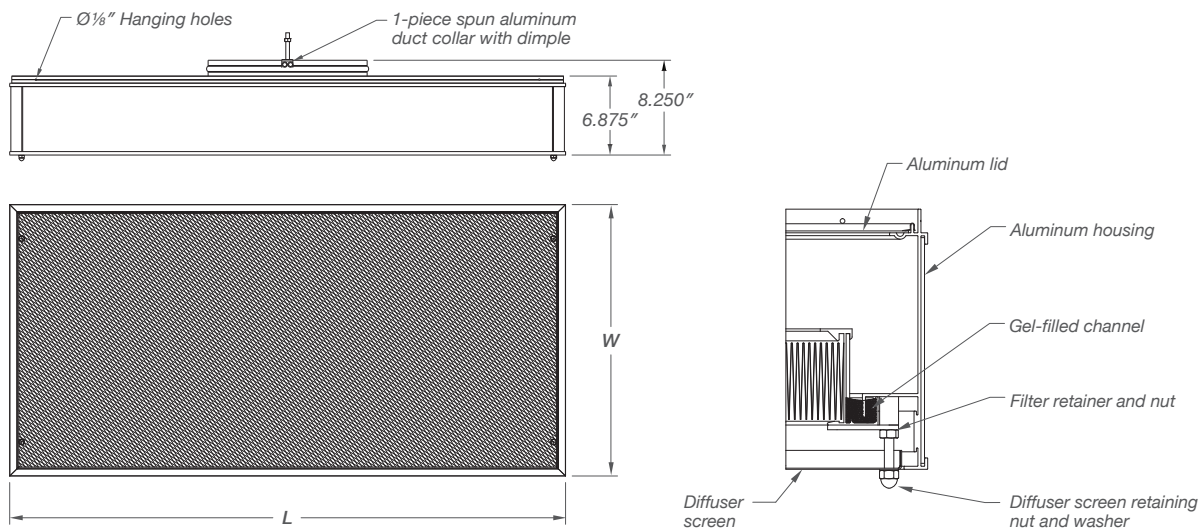
** = Add N for No Insulation, T for Top Insulation, or B for Insulation on Top and Sides

Sample Model Number: LP24-1-F2A-AN – Filter ordered separately and must be 2" deep

Fixed Baffle: 0-007-2-19-06-SU-52-00-21A45A

Adjustable Baffle or Split Butterfly Damper: E-007-2-19-06-SU-52-00-21A45A

(E indicates extruded centerboard with adjustment port)



Options

Model 24 LP modules are available with nominal 8", 10", 12", or 14" diameter inlet collars. Optional 1" thick vinyl-backed fiberglass insulation can be applied to the top and/or sides of the module. The standard design utilizes an adjustable baffle plate; however, a split butterfly damper and a fixed distribution plate are also available.

AAF | Flanders®

9920 Corporate Campus Drive, Suite 2200, Louisville, KY 40223-5690
888.223.2003 Fax 888.223.6500 | aafintl.com

AAF Flanders has a policy of continuous product research and improvement and reserves the right to change design and specifications without notice.

©2017 AAF International and its affiliated companies.

ISO Certified Firm

AFP-1-370 01/17