

## **AmericanAirFilter**<sup>®</sup> **VariSorb**<sup>®</sup> XL

### *High Efficiency Gas-Phase Filter*

- *Highest activity carbon*
- *Energy efficient mini-pleat design*
- *Corrosion-free, non-metal construction*
- *Easy to retrofit particulate installations*
- *Fully incinerable*

VariSorb XL high efficiency filters are designed to improve indoor air quality through the effective removal of indoor and outdoor gaseous contaminants typically found in the urban environment. This includes VOCs, SO<sub>x</sub>, NO<sub>x</sub>, and Ozone. The VariSorb XL filter is suitable for retrofit into existing HVAC systems, for specification in new construction, or for direct replacement of 12" deep, single header filters.

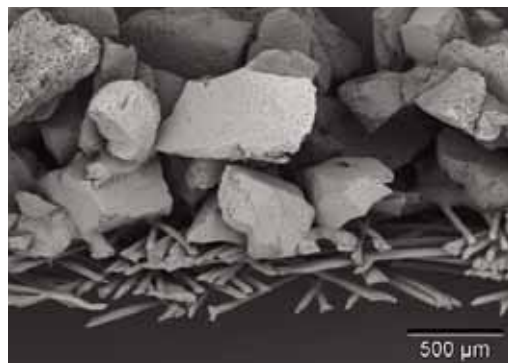
### **Construction**

VariSorb XL filters consist of filter elements assembled in a V-bank configuration in High Impact Polystyrene (HIPS) cell sides. The header and cell sides provide a sturdy construction that resists damage during shipping, handling, and operation. Constructed of plastic, the VariSorb XL filter is fully incinerable. The pleated filter elements provide a high media area and low resistance.



### **Media**

The VariSorb XL filter features a pleated media comprised of very high activity carbon particles bonded into a matrix of bi-component fibers. The very small carbon granules, unlike traditional granular bed chemical filters, provide a granular microstructure which ensures a much higher effective area per pound of media, resulting in a high spontaneity of adsorption. Combined with the dense packing of the microstructure, this creates a tortuous path for the contaminant, resulting in a high yield for the filter. The bi-component fiber matrix maximizes the exposure of the sorbent to the gas while securely bonding it within the media. Dusting is nearly eliminated, and pressure drop is minimized.



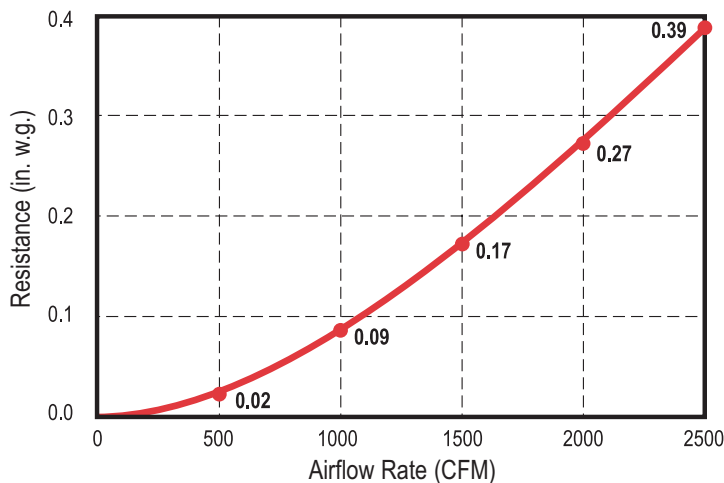
*Microphotograph showing fiber-carbon matrix used to maximize available carbon surface area.*

### Product Information – Standard Sizes

Nominal Sizes (Inches) (W x H x D)	Actual Sizes (Inches) (W x H x D)	Rated Airflow Capacity (SCFM)			Media Area (sq. ft.)
		Low	Med	High	
24 x 12 x 12	23 <sup>3</sup> / <sub>8</sub> x 11 <sup>3</sup> / <sub>8</sub> x 11 <sup>1</sup> / <sub>2</sub>	750	1000	1250	28
24 x 20 x 12	23 <sup>3</sup> / <sub>8</sub> x 19 <sup>3</sup> / <sub>8</sub> x 11 <sup>1</sup> / <sub>2</sub>	1250	1650	2100	51
24 x 24 x 12	23 <sup>3</sup> / <sub>8</sub> x 23 <sup>3</sup> / <sub>8</sub> x 11 <sup>1</sup> / <sub>2</sub>	1500	2000	2500	63

### Performance Data

**Initial Resistance vs. Airflow**  
(based on 24x24x12 filter)



### Specifications

**Maximum Operating Temperature:** 130°F (54°C)

**Maximum Relative Humidity:** 95%

**Cell Sides:** The molded end panels are made of HIPS. The extruded vertical components are made of Acrylonitrile Butadiene Styrene (ABS).

**Media:** Mini carbon granulate bonded to bi-component fibers.



SAAF™ cassettes, replacement panels, and housings remove gaseous contaminants from most applications. They are available across a complete range of pressure drop and removal efficiencies.